

SAMUEL HEATH

Product Number: V7K43-1LFNP

Description: 3 Hole wall mounted bath mixer with diverter, without plate, 180mm spout length



Standards



Flow rates

Litres/Min	0.1 Bar	0.5 Bar	1.0 Bar	2.0 Bar	3.0 Bar	4.0 Bar	5.0 Bar
					20.8	23.5	26.3

Flow rate data provided is indicative of each product and is given in open outlet conditions. Installation design, external connections and fittings not supplied may affect the data provided.

Finishes Available



Chrome Plate



Polished Nickel



Non Lacquered Brass



Stainless Steel Finish



Stainless Steel with Matt Black



Urban Brass



City Bronze



Matt Black Chrome



Country Bronze



Urban Brass Matt Lacquered



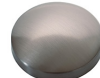
Antique Brass Matt



Antique Brass Gloss



Amber Brass

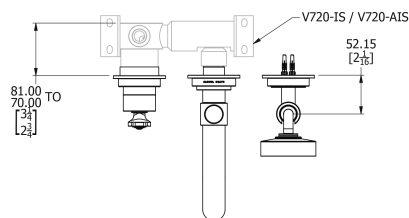


Anthracite

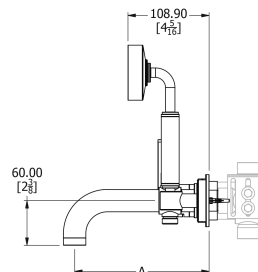
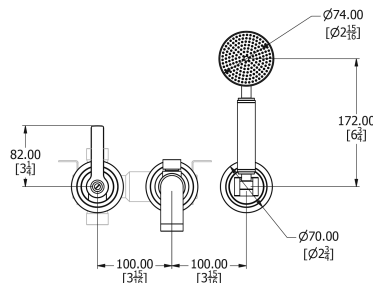
Control Options Available



Specification Drawing



V7K43-NP-1: A = 180mm (7 1/16")
V7K43-NP-2: A = 210mm (8 1/4")



UK Customer Service

Leopold Street
Birmingham
B12 0UJ
Tel: +44 121 766 4200
Email: info@samuel-heath.com

US Customer Service

Federal I.D. No. 58-1504682
Email: usa@samuel-heath.com

Specification Enquiries

Design Centre Chelsea Harbour
1st Floor, North Dome, London
SW10 0XE
Tel: 020 7352 0249
Email: showroom@samuel-heath.com

1-31/03/2025