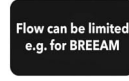


# SAMUEL HEATH

**Product Number:** V7K17S-2LW

**Description:** 3 Hole wall mounted basin filler, slim spout. 180mm spout length

## Standards



## Flow rates

Litres/Min	0.1 Bar	0.5 Bar	1.0 Bar	2.0 Bar	3.0 Bar	4.0 Bar	5.0 Bar
		1.7	2.5	3.8	4.0	4.0	4.0

Flow rate data provided is indicative of each product and is given in open outlet conditions. Installation design, external connections and fittings not supplied may affect the data provided.

## Finishes Available



## Control Options Available

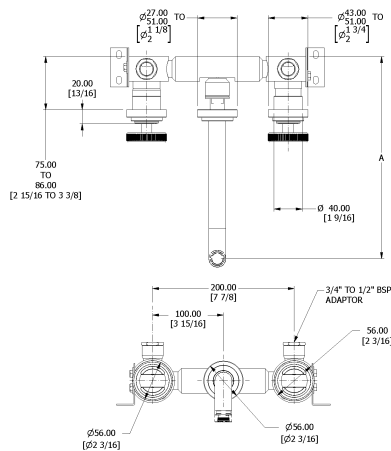
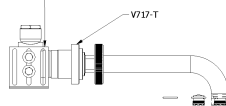


## Specification Drawing

### SPOUT LENGTHS:

V7K17-1: A = 215mm to 227mm [ 8 1/4 to 8 13/16 ]  
 B = 140mm [ 5 1/2 ]  
 V7K17-2: A = 255mm to 267mm [ 8 1/2 to 10 1/2 ]  
 B = 180mm [ 7 1/8 ]  
 V7K17-3: A = 285mm to 297mm [ 11 1/4 to 11 13/16 ]  
 B = 210mm [ 8 1/4 ]

SEE INSTALLATION KIT DRAWING  
 UK & EUR - V718 - 15 - XX  
 US - V718 - A15 - XX



### UK Customer Service

Leopold Street  
 Birmingham  
 B12 0UJ  
 Tel: +44 121 766 4200  
 Email: info@samuel-heath.com

### US Customer Service

Federal I.D. No. 58-1504682  
 Email: usa@samuel-heath.com

### Specification Enquiries

Design Centre Chelsea Harbour  
 1st Floor, North Dome, London  
 SW10 0XE  
 Tel: 020 7352 0249  
 Email: showroom@samuel-heath.com