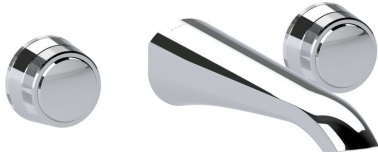


# SAMUEL HEATH

**Product Number:** T10K17-2R

**Description:** 3 Hole wall mounted basin filler, 213mm spout height

## Standards



## Flow rates

Litres/Min	0.1 Bar	0.5 Bar	1.0 Bar	2.0 Bar	3.0 Bar	4.0 Bar	5.0 Bar
			3.4	4.9	6.2	7.2	8.2

Flow rate data provided is indicative of each product and is given in open outlet conditions. Installation design, external connections and fittings not supplied may affect the data provided.

## Finishes Available



Chrome Plate



Polished Nickel



Stainless Steel  
Finish



Stainless Steel  
with Matt Black



City Bronze



Matt Black Chrome



Brushed Gold Matt



Polished Nickel  
with Gloss Black  
Chrome



Brushed Gold Matt  
with City Bronze



Stainless Steel  
Finish with City  
Bronze



Antique Gold with  
Gloss Black  
Chrome



Antique Brass Matt



Anthracite

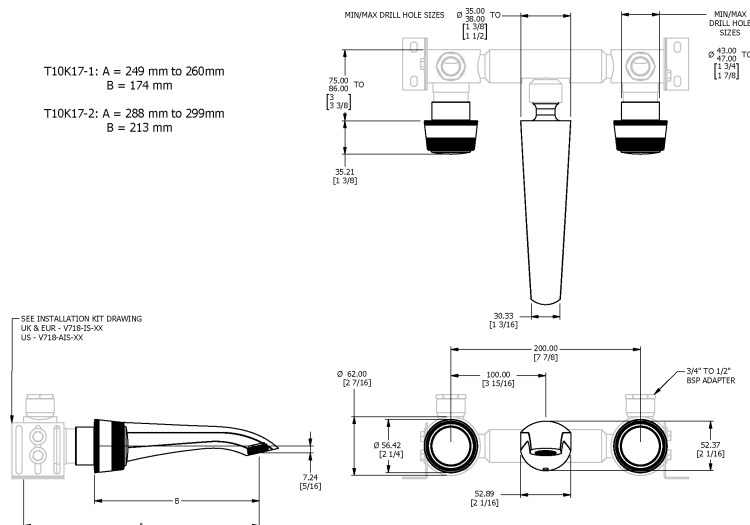
## Control Options Available



## Specification Drawing

T10K17-1: A = 249 mm to 260mm  
B = 174 mm

T10K17-2: A = 288 mm to 299mm  
B = 213 mm



### UK Customer Service

Leopold Street  
Birmingham  
B12 0UJ  
Tel: +44 121 766 4200  
Email: info@samuel-heath.com

### US Customer Service

Federal I.D. No. 58-1504682  
Email: usa@samuel-heath.com

### Specification Enquiries

Design Centre Chelsea Harbour  
1st Floor, North Dome, London  
SW10 0XE  
Tel: 020 7352 0249  
Email: showroom@samuel-heath.com

1-28/01/2025