

SAMUEL HEATH

Product Number: T10K17-2LA

Description: 3 Hole wall mounted basin filler, 213mm spout height

Standards



Flow rates

Litres/Min	0.1 Bar	0.5 Bar	1.0 Bar	2.0 Bar	3.0 Bar	4.0 Bar	5.0 Bar
			3.4	4.9	6.2	7.2	8.2

Flow rate data provided is indicative of each product and is given in open outlet conditions. Installation design, external connections and fittings not supplied may affect the data provided.

Finishes Available



Chrome Plate



Polished Nickel



Stainless Steel
Finish



Stainless Steel
with Matt Black



City Bronze



Matt Black Chrome



Brushed Gold Matt



Polished Nickel
with Gloss Black
Chrome



Brushed Gold Matt
with City Bronze



Stainless Steel
Finish with City
Bronze



Antique Gold with
Gloss Black
Chrome



Antique Brass Matt



Anthracite

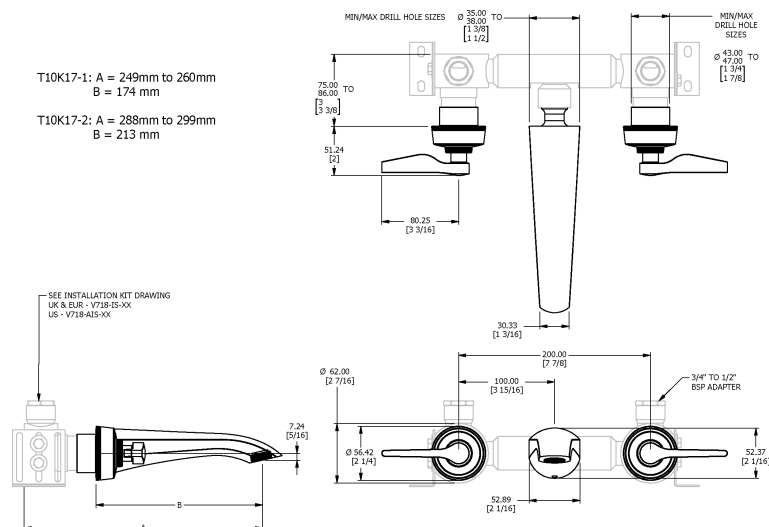
Control Options Available



Specification Drawing

T10K17-1: A = 249mm to 260mm
B = 174 mm

T10K17-2: A = 288mm to 299mm
B = 213 mm



UK Customer Service

Leopold Street
Birmingham
B12 0UJ
Tel: +44 121 766 4200
Email: info@samuel-heath.com

US Customer Service

Federal I.D. No. 58-1504682
Email: usa@samuel-heath.com

Specification Enquiries

Design Centre Chelsea Harbour
1st Floor, North Dome, London
SW10 0XE
Tel: 020 7352 0249
Email: showroom@samuel-heath.com

1-28/01/2025